

rooftite® system

Airtight. Windtight.

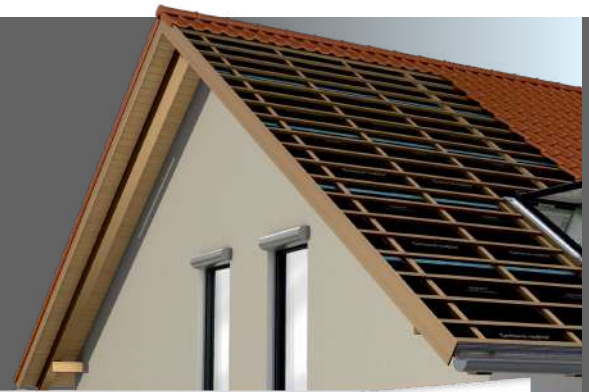
Products for the building shell

Proven since 1961

Windtight.

Outdoor application

Underlay roofing membranes (URM) are an important element of the roof structure. They fulfil several functions and help to protect the underlying roof structure. Underlay roofing membranes are laid on the rafter layer and rest on the insulation layer, the timber boarding, or suitable wood-based panels. They allow the drainage of water that is driven in through leaks in the roof covering and protect the insulation from air movement within the structure. Overall, the underlay roofing membranes help to protect the roof in the long term and save energy.



Gerband 394 Construction protection

Highly functional vapour barrier

16

- Temporary weather protection for wall and ceiling components in timber or prefabricated timber construction
- Protects the wooden structure against moisture penetration due to outdoor weathering and dirt during the construction phase
- Permanent self-adhesive vapour barrier and airtight seal on wooden materials or mineral substrates

Gerband 587

Special film adhesive tape, heat and cold resistant

4 5 14



- Bonding of underlay roofing and façade membranes on the cold side of the construction; temperature stable up to +120°C
- Bonding and sealing of overlaps, joints, and penetrations; can be applied at temperatures as low as -10°C

Gerband 390 Non-woven adhesive tape for underlay roofing membranes and insulation boards

4 5 14



- Bonding and repairing underlay roofing membranes; adheres very quickly to non-woven and film surfaces
- Bonding & sealing underlay roofing membranes and insulation boards in roof valleys
- Extra-strong HBA® adhesive layer, optimised for good adhesion, especially to membranes that are difficult to bond

Gerband 603

Screw and nail sealing tape; double-sided

6



- Reliable sealing of screw threads and nail shafts
- Compensates for minor unevenness in the substrate; ensures even contact pressure of the counter-battens
- Harmonised with the ZVDH leaflets

Gerband 301

Diffusion-open window jointing tape

8



- Good adhesion even at low temperatures
- Adheres very well to the common window materials: wood, aluminium, and PVC
- Optionally available with a patented special edge for good adhesion to all types of plaster

Gerband 325

Moisture-variable window jointing tape

3 9 8



- Can be used either indoors or outdoors; forms a very good bond with all types of plaster
- Good adhesion even at low temperatures
- Adheres perfectly to typical window, door, and wall construction materials such as wood, aluminium, plastic, brick, concrete, and smooth finishes

Gerband Isovent® 130 DAF / 150 DAF / 190 DA URM / FM

12 15



- Underlay roofing membranes and façade membranes (FM) with a diffusion-promoting s_d value of 0.03 m for universal use on the outside of buildings
- Complies with ZVDH requirements for roof and façade construction materials

Gerband Isovent® 230 DS URM

15



- Underlay roofing membrane that is fall-through-proof according to the rules of DIN 4426, with a diffusion-promoting s_d value of 0.03 m
- Meets the requirements of the ZVDH for roofing materials

Gerband Respira® 230 DAF URM / FM

12 15



- Underlay roofing membrane and façade membrane (FM) with a diffusion-promoting s_d value of 0.03 m for use on the outside of buildings
- Complies with ZVDH requirements for roof and façade construction materials

FORTAX® 6600 1-K SMP adhesive

10 13 2 15



- Strongly adhering sealing adhesive for universal interior and exterior use on all rough surfaces; for bonding overlaps and joints of non-woven-laminated underlay roofing and façade membranes
- Sealing in conventional building, timber, glass, metal, and façade construction; weather-resistant, permanently elastic

Gerband Primer Adhesion promoter

Adhesion promoter

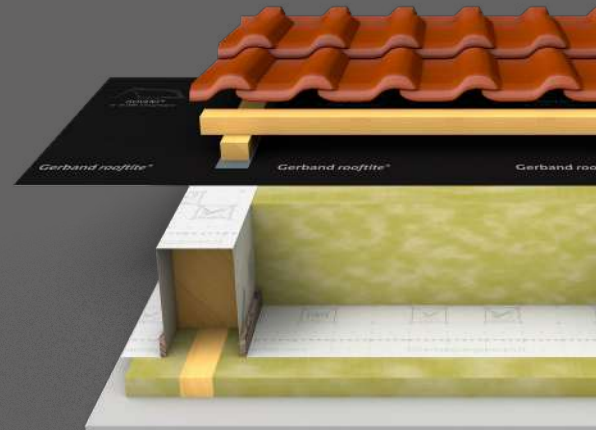


- For wood, wood-based materials, masonry, and concrete; can also be used on slightly damp substrates
- to be applied with a brush or spatula; quick drying, economical in use



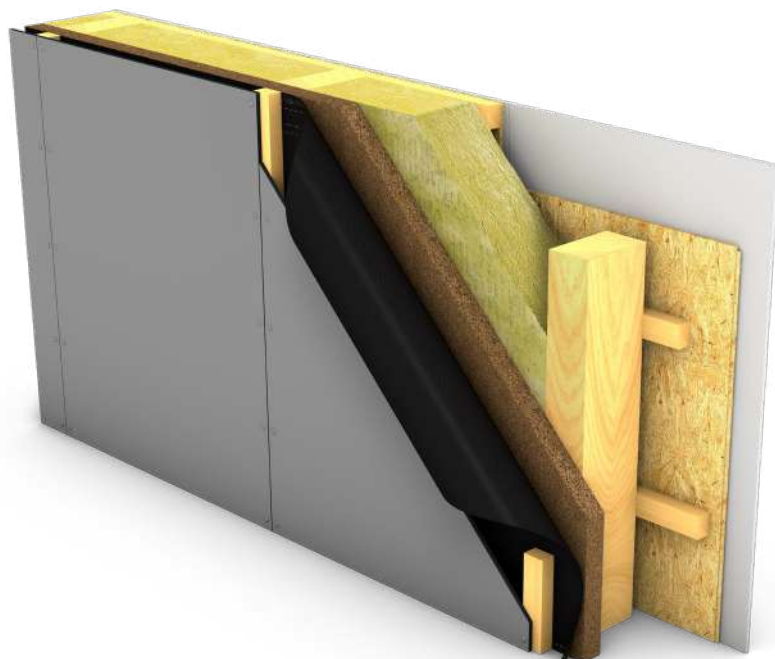
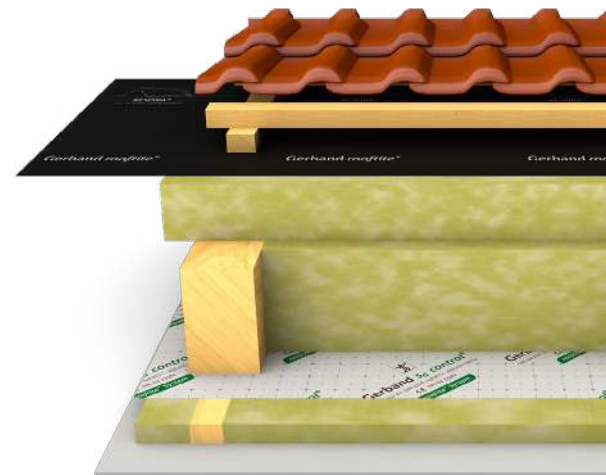
Construction protection

Underlay roofing membranes protect the roof structure against wind, rain, and drifting snow. This protection is particularly important during the construction phase, prior to the installation of the roof covering. However, it remains crucial once the roof is fully completed. Diffusion-open underlay roofing membranes allow water vapour, which is inevitable within the insulated roof space due to flank diffusion, to escape to the outside. This helps to prevent moisture-related issues that could damage the roof structure over time, ensuring its long-term functionality and durability.



Non-ventilated roofs with insulation between and on top of rafters

Insulation between and on top of rafters are two different approaches to the efficient insulation of roofs. Insulation placed between the rafters is limited in thickness by the available space. In contrast, above-rafter insulation is more effective, as it is installed on the exterior of the rafters, which also reduces thermal bridges. The optimal insulation effect can be achieved by combining both methods. All combinations of *rooflite*® vapour barriers and underlay roofing membranes are compatible with these approaches.



Façades made of large-format or small-format elements

A ventilated façade construction usually consists of several layers, including the cladding, the ventilation zone, insulation, and substructure. The outermost layer can be made of a variety of materials, such as wood, natural stone, sheet metal, or glass. It is at this point that the *rooflite*® products from the *Respira*® and *Isovent*® series can demonstrate their full performance potential, ensuring the effective functioning and durability of the respective component.

rooflite® system



Vapour barriers and underlay roofing membranes

+



Adhesive tapes

+



Adhesive sealants

+

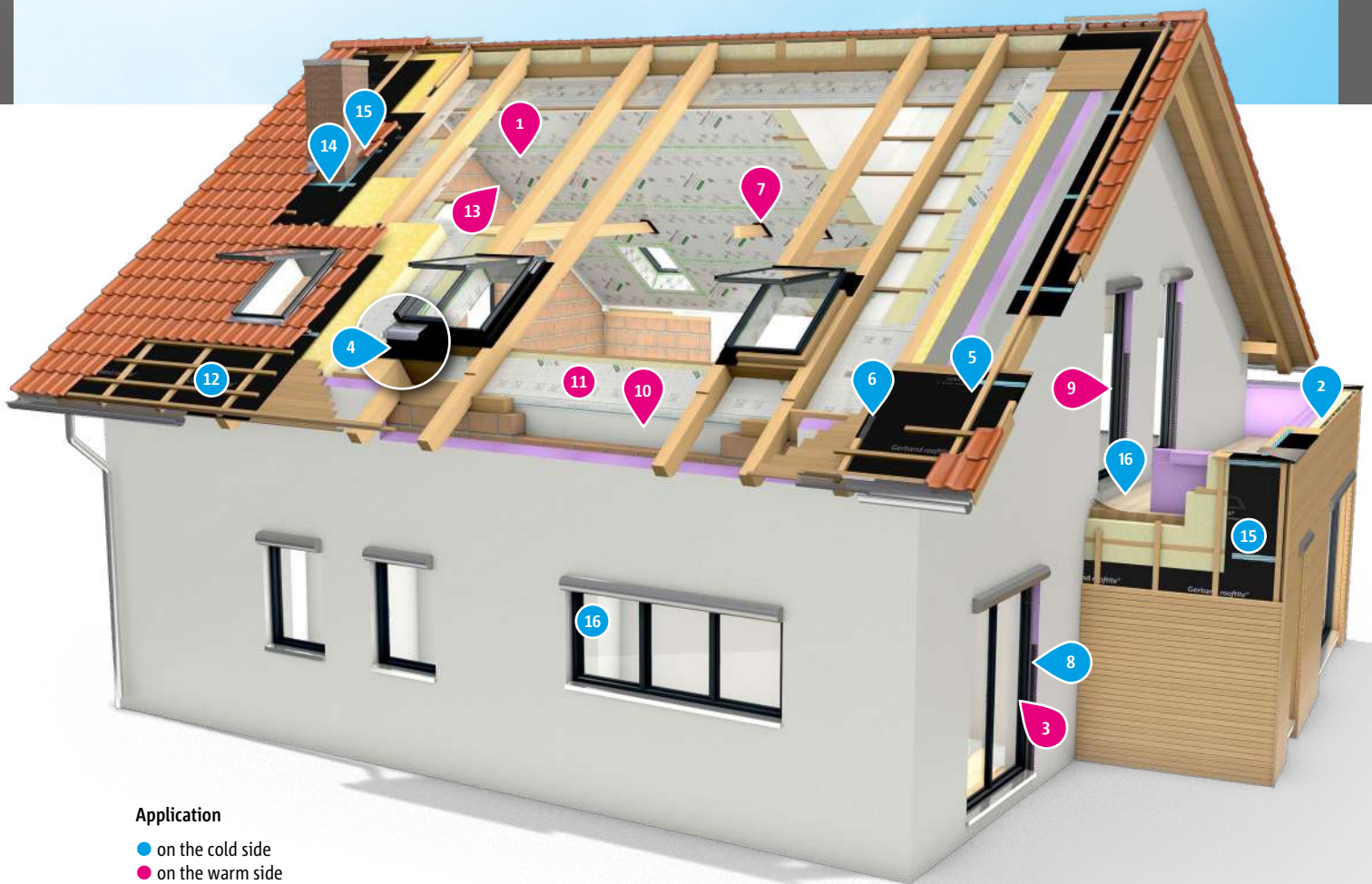


Primer

=




Airtight. Windtight.



Application

- on the cold side
- on the warm side

 We are happy to support you with advice and assistance on technical application issues and provide you with samples for testing with original materials. Just ask us!

The above chemical, physical, and application-related information is based on our own tests and experience. Gerlinger products are used in countless industrial, craft, and technical areas; the requirements placed on the products are extremely diverse, so it is essential that users check the suitability of our products for their specific purpose before use. All information, notes, and recommendations are provided to the best of our knowledge, but without guarantee. We reserve the right to make changes to the technical specifications.



Application matrix

roofite® system

Gerband

FORTAX®



185/186 301/325/350 390 582/586/581 587 589 603 605 612 989 6400 6500 6600

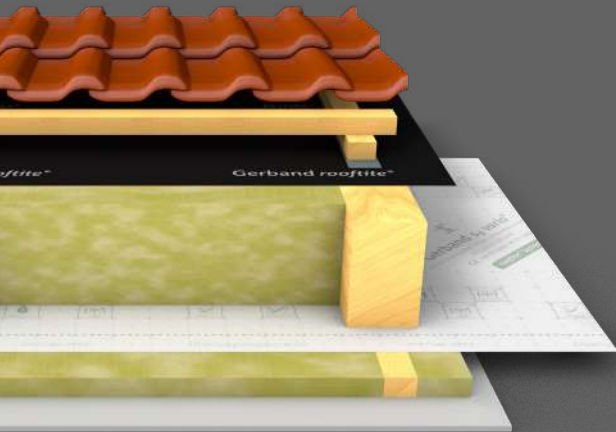
1 3 9 8 3 9 4 5 14 1 3 9 4 5 14 6 7 3 9 10 13 10 13 15 10 13 15

on the warm side on the cold side

	185/186	301/325/350	390	582/586/581	587	589	603	605	612	989	6400	6500	6600
VAPOUR BARRIERS, URM, AND FM													
11 <i>sg vario</i>	●	●	●	●	●	●	●	●	●	●	●	●	●
11 <i>sg control®</i>	●	●	●	●	●	●	●	●	●	●	●	●	●
11 Vapofol® 100	●	●	●	●	●	●	●	●	●	●	●	●	●
12 15 Isovent® 130 DAF / 150 DAF / 190 DA		●	●	●	●	●	●	●	●	●	●	●	●
12 Isovent® 230 DS		●	●	●	●	●	●	●	●	●	●	●	●
12 15 Respira® 230 DAF		●	●	●	●	●	●	●	●	●	●	●	●
Gerband 394 Construction protection	●	●	●	●	●	●	●	●	●	●	●	●	●
WOOD													
Rafters, purlins, clamps, beams	●	●	●	●	●	●	●	●	●	●	●	●	●
Wood, rough sawn		●	●	●	●	●	●	●	●	●	●	●	●
Wood, planed	●	●	●	●	●	●	●	●	●	●	●	●	●
OSB boards	●	●	●	●	●	●	●	●	●	●	●	●	●
Chipboards	●	●	●	●	●	●	●	●	●	●	●	●	●
MDF boards		●	●	●	●	●	●	●	●	●	●	●	●
Soft wood fibreboards		●	●	●	●	●	●	●	●	●	●	●	●
MINERAL													
Chipboard, cement-bound		●	●	●	●	●	●	●	●	●	●	●	●
Gypsum plasterboard	●	●	●	●	●	●	●	●	●	●	●	●	●
Gypsum fibreboards		●	●	●	●	●	●	●	●	●	●	●	●
Concrete, smooth		●	●	●	●	●	●	●	●	●	●	●	●
Concrete, formwork rough		●	●	●	●	●	●	●	●	●	●	●	●
Plaster (smooth coat), gypsum		●	●	●	●	●	●	●	●	●	●	●	●
Brick		●	●	●	●	●	●	●	●	●	●	●	●
Natural stone, hard		●	●	●	●	●	●	●	●	●	●	●	●
Natural stone, porous		●	●	●	●	●	●	●	●	●	●	●	●
Aerated concrete blocks		●	●	●	●	●	●	●	●	●	●	●	●
Chimney, mineral		●	●	●	●	●	●	●	●	●	●	●	●
Masonry, plastered		●	●	●	●	●	●	●	●	●	●	●	●
Masonry, unplastered		●	●	●	●	●	●	●	●	●	●	●	●
Concrete, prefabricated		●	●	●	●	●	●	●	●	●	●	●	●
OTHERS													
Metals (without corrosion)	●	●	●	●	●	●	●	●	●	●	●	●	●
Powder-coated surface	●	●	●	●	●	●	●	●	●	●	●	●	●
Varnished surface	●	●	●	●	●	●	●	●	●	●	●	●	●
Plastics (rigid PVC, PE)	●	●	●	●	●	●	●	●	●	●	●	●	●
Styrofoam	●	●	●	●	●	●	●	●	●	●	●	●	●
Extruded rigid insulation foam (XPS)	●	●	●	●	●	●	●	●	●	●	●	●	●
Plastic pipes	●	●	●	●	●	●	●	●	●	●	●	●	●
Chimney (stainless steel / plastic)	●	●	●	●	●	●	●	●	●	●	●	●	●
Electrical installation cables	●	●	●	●	●	●	●	●	●	●	●	●	●

● recommended ● possible ● pre-treat with Primer 6200/6300 ● only the rough side ● bonded with Fortax

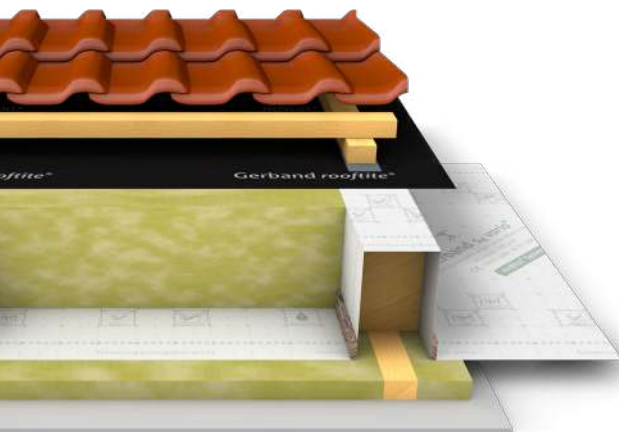
Airtight.



Saving energy

A well-planned roof structure contributes significantly to the energy efficiency of the building, including both summer and winter thermal insulation.

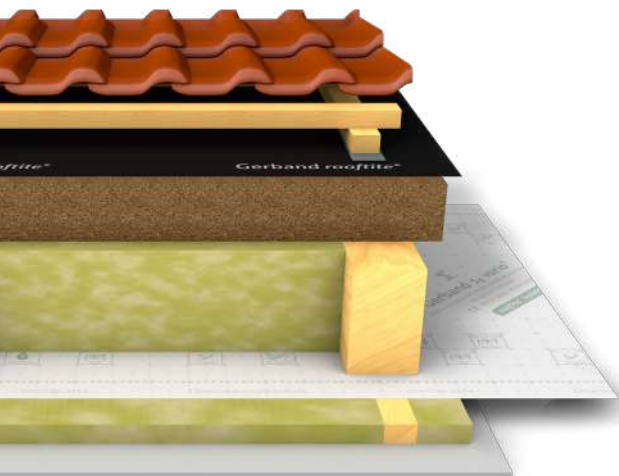
The choice of the right insulation material, which meets the requirements for both thermal and sound insulation, as well as its protection by air- and windtight layers, is crucial. The specific requirements for airtightness in building components are outlined in DIN 4108-7. The rooflite® system is designed to meet these requirements, ensuring a well-sealed roof that minimises uncontrolled air exchange and prevents heat loss caused by draughts. Proper integration and sealing of joints and penetrations are essential for achieving optimal performance.



Renovation of non-ventilated roofs from the outside

When renovating from the outside, a loop-shaped installation of the vapour barrier over the rafters is required to avoid disturbing the finished interior of the attic.

Gerband s_d vario is the ideal solution for this type of installation and can be used without additional verification, in compliance with the requirements of DIN 4108-3. It is also compatible with all underlay roofing membranes for this application.



Non-ventilated roofs with intermediate insulation and soft wood fibre boards

This type of construction is commonly used in modern residential buildings. One additional benefit is the ability to insulate the gable walls in the vicinity of the wall crowns with soft wood fibre insulation, effectively minimising thermal bridges. Depending on the specific soft wood fibre board used, all combinations of rooflite® vapour barriers and underlay roofing membranes are suitable for this application.



Indoor application

Without a functioning vapour barrier, moisture is transported almost unhindered by convection of the indoor air outwards into the insulation, where it accumulates. In the cold season, this moisture condenses and permeates the insulation and construction. This considerably reduces the insulating effect, causing the interior to cool down. In addition, such convective air flows naturally extract heat directly from the rooms, which must be replenished by the heating system to keep the rooms comfortable. Therefore, vapour control layers are essential in maintaining insulation, saving energy, and ensuring a comfortable indoor environment.



Gerband 185, 186 / 582, 586 hermetic

Airtightness adhesive tape

1 3 9



- Bonding of overlaps and joints of vapour barriers and butt joints of OSB boards on the inside
- Gerband 185 and 186 can be torn by hand due to the moisture-repellent special paper carrier
- Gerband 582 has a cross-tearable carrier film and can be torn crosswise by hand

Gerband 589 MultiTape

Air and windtightness adhesive tape

1 3 9
4 5 14



- Bonding of overlaps and joints in vapour barriers, underlay roofing, and facade membranes
- Can be used universally on the inside and outside of roof and wall constructions

Gerband 581 QuickSeal

Air and windtightness adhesive tape

1 3 9



- Adhesive tape without release liner; no waste during installation
- For sealing overlaps and joints in vapour barriers and for sealing butt joints on the inside of OSB boards
- Gerband 581 has a cross-tearable carrier film and can be torn crosswise by hand

Gerband 605

Universal sealing collar on a roll

7



- For bonding the airtight or windtight layer to almost any geometry; significant time saving compared to prefabricated sealing sleeves
- Can be used in particular for the subsequent sealing of penetrating installations

Gerband 612

Non-woven butyl sealing tape

3 9



- Pliable and waterproof butyl sealing tape with high adhesion
- Sealing of joints and connections in the construction sector
- Can be plastered and painted over

Gerband 350

Diffusion-inhibiting window/door sealing tape

3 9

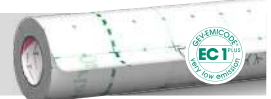


- Excellent bonding to all types of plaster due to the patented special edge, even at low temperatures
- Adheres perfectly to typical window, door, and wall construction materials such as wood, aluminium, plastic, brick, concrete, and smooth finishes

Gerband s_d vario

Climate membrane

11



- Variable s_d value between 0.25 and 5 m; can be used to promote drying out in new and old buildings in accordance with the regulations of DIN 4108-3 without the need for proof of building physics
- Fulfills the requirements of DIN 4108-3 for a vapour barrier for loopshaped installation during renovation from the outside

Gerband s_d control®

Vapour barrier

11



- Functional s_d value of 2 m; can be used on the warm side indoors in accordance with DIN 4108-3
- Supports re-drying of the construction through two-way diffusion
- Can be used in new buildings and for renovation of old buildings

Gerband Vapofol® 100

PE film vapour barrier

11



- Regenerate-free PE vapour barrier with s_d value of 100 m; can be used on the warm side indoors in accordance with DIN 4108-3
- Economical and efficient to install due to its low weight despite its large width

FORTAX® 6500 All In One

Adhesive sealant for indoor and outdoor use

10 13

15



- Permanent bonding and sealing of vapour and wind barriers to the building structure; compensation of component movements due to permanent elasticity
- Permanently self-adhesive, even after the adhesive bead has dried
- Freeze-resistant without the use of solvents

Gerband 989

Polyacrylate strip adhesive; double-sided

10 13



- Permanently moisture-resistant acrylic pressure-sensitive adhesive with very high ageing resistance
- Ready to use from the roll; requires no drying time
- For bonding vapour barriers to the building structure in timber construction



Experience matters

Airtight and windtight building
with the Gerband *rooftite*® system

An airtight building envelope is a fundamental requirement for modern, energy-efficient construction in accordance with established technical standards. Our comprehensive range of Gerband *rooftite*® products ensures that we can meet your specific requirements. Our rigorous research and development process ensures that our non-toxic products consistently meet the highest quality standards and comply with all relevant regulations.

The primary objective of airtight construction, whether in the roof, façade, or floor area, is to safeguard the insulation and the overall structure. It is essential that the building envelope is sufficiently tight to prevent moisture from entering the insulation and structure. In the event that this is not the case, the insulation effect will be significantly reduced, and mould will rapidly form. Furthermore, the risk of rot attacking timber constructions increases, which can lead to a reduction in their load-bearing capacity. Such an outcome would result in significant structural damage and a considerable waste of energy. Gerband *rooftite*® products offer highly ageing-resistant solutions that effectively protect and preserve your building, while also contributing to CO₂ reduction through an energy-saving construction method. Furthermore, our *rooftite*® programme, when used in conjunction with professionally designed structural wood protection in line with DIN 68 800, provides the option of eliminating the need for chemical impregnation of load-bearing timber components, thus ensuring healthy and environmentally-friendly living and working conditions.

Gerband *rooftite*® products are suitable for use in a variety of building types, including residential, office, commercial and industrial premises. Regardless of whether a new build, renovation, or modernisation project is being undertaken, an airtight building envelope can be achieved that will serve its purpose for decades to come.

The Gerlinger Group

The complete range of adhesive tapes, sealants, and membranes
for roof and façade protection

For over 60 years, we have been manufacturing adhesive and sealing technology products, ensuring secure connections and seals in countless technical applications.

Our decades of experience, high degree of specialization, and highly trained, technically competent employees enable us to cover the entire vertical range of manufacture of our adhesive tapes and sealants. Our product range includes adhesives and sealants, which are produced from the smallest basic building blocks through to complex formulations using polymerisation and formulation techniques. We coat and extrude these onto a wide variety of carrier materials and convert them into rolls, cross-coils, and die-cut parts. We also develop application aids and new processes for customers.

We are at the forefront of high-tech product development, advancing the state of the art in self-adhesive technology. This allows us to respond rapidly to customer requirements worldwide and to meet the evolving standards and expectations of our customers. For us, uncompromising quality is our top priority. We are a reliable technology partner to well-known companies and have established a leading position in the field of self-adhesive and sealing technology.

We look forward to your enquiry - just ask us!

Gerlinger GmbH & Co. KG

Adhesive Tape and Sealant Factories

Dietrich-Gerlinger-Strasse 1
D-86720 Noerdlingen

Telephone +49 (0)9081-213-0
Telefax +49 (0)9081-213-100
e-Mail info@gerband.de
www.gerband.de

